

PetroSkills®



The Solution for O&M Workforce Development

Are you building a competent O&M workforce?

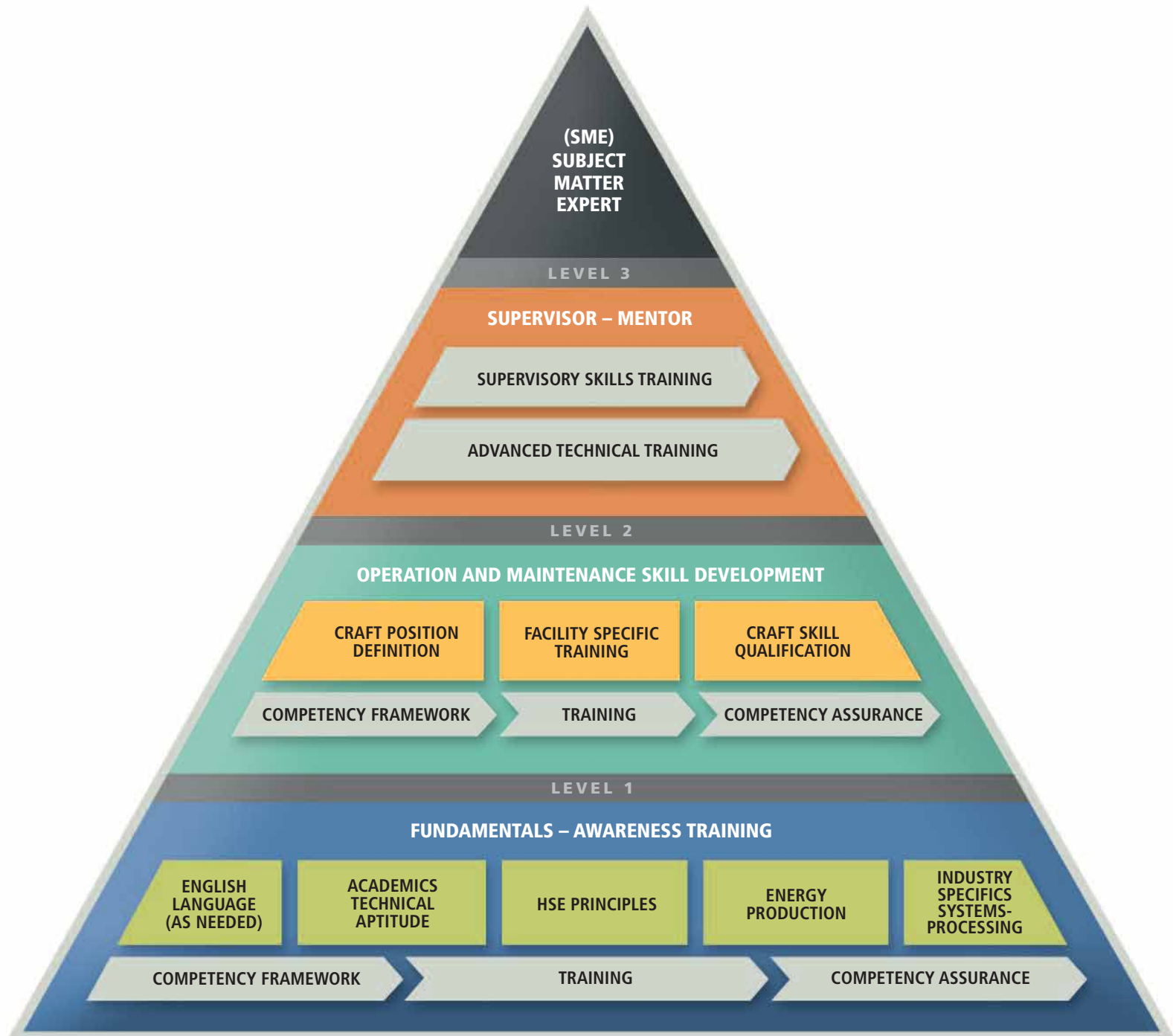
It's one thing to talk about developing the competency of
your employees, it's another thing to get them there.

What does it really mean? How do you establish that
baseline for competency development?

Is your company prepared for the future?

PetroSkills can lead you there.

Sustainable Training Program





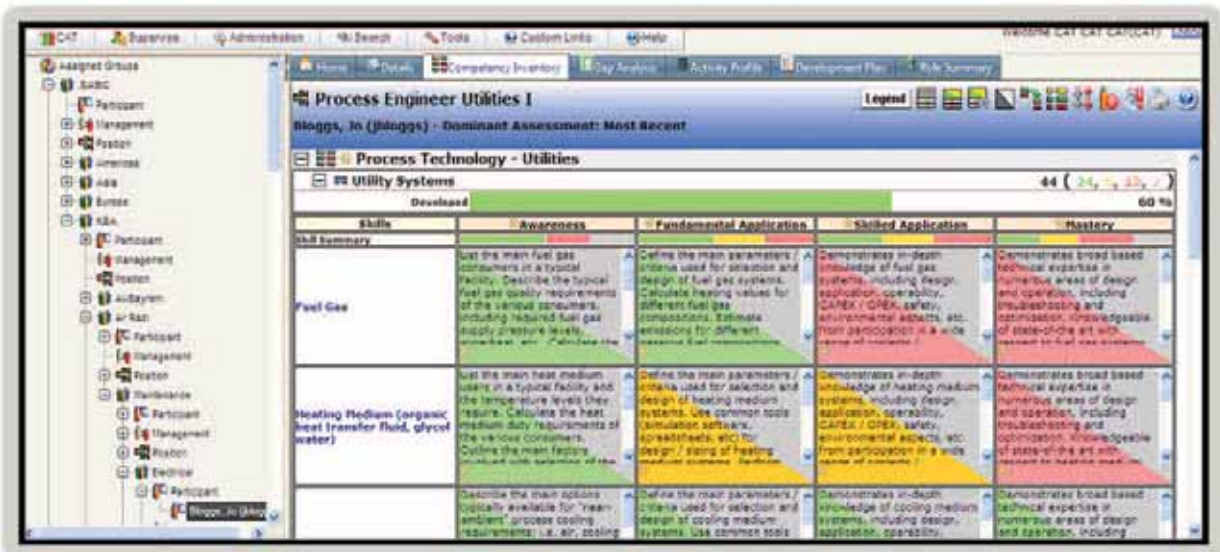
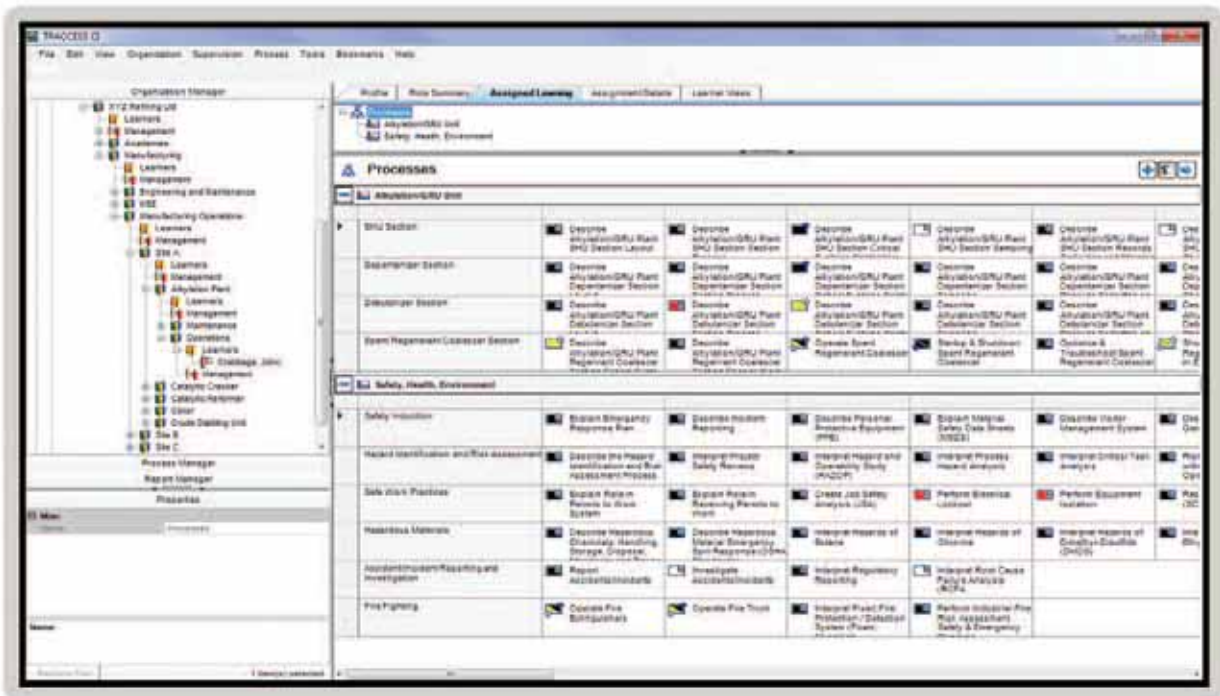
How do you assure your workforce is being developed?



The PetroSkills Competency System provides the four components that are essential for effective implementation of a competency solution:

- **A framework of competency definitions:** created by PetroSkills, and supported by SME-consultants to refine the map to fit your competency motivators and requirements.
- **Competency Management System software:** The proven PetroSkills software that ensures the effective implementation and sustainability of the competency solution.
- **Learning & Development solutions:** including the globally-delivered PetroSkills formal training courses and the development of training materials for on-job training and e-learning.
- **People and Process:** PetroSkills globally-based and internationally experienced consultants, combined with proven methodologies and processes, ensure efficient, effective, and consistent development. This ensures implementation of effective and sustainable competency solutions.

Implement the Competency Management System



The PetroSkills competency software is the tool that provides an effective way to:

- Organize, manage, measure, and report on all aspects of employee competency, compliance, and learning.
- Manage career development, workforce competence, succession planning, etc.
- Focus on the job tasks and skills needed for the development of the front line workers in an operational environment.
- Identify skills gaps at individual and group level – create development plans based on the learning and development integrated with the software.

Learning & Development - blended learning solutions.

PetroSkills Learning and Development covers the whole spectrum of knowledge transfer methodologies from formal classroom training to self-study on-line modules and on-job training work experience. This is the third element of a competency system, and by ensuring that all L&D is competency-based ensures that it is relevant and effective, which minimizes training cost and decreases time to competency.

Learning Resources (Web-based or Local)

Valve Terminology

Before we examine different types of valves, we need to examine the terminology used for valve components. The illustration shows a common valve with the following primary components:

- body
- disc (gate)
- collar (yoke)
- bonnet
- gasket
- flanges
- stem (spindle)
- seat (rings)
- bushing
- hand wheel.

Body

The body forms the outline of the valve and supports the other valve components. The valve body connects to the piping system by:

- bolled flange connections (shown)
- threaded connectors
- welded joint
- other connection methods (such as glue) depending on the piping material.

The screenshot shows a sidebar with a tree view of valve types and a main content area with text, a list of components, and several diagrams of valve parts and connections.

Enclosure

Design

The enclosure consists of a frame (or yoke) and two end brackets (or bearing housings). The stator is mounted inside the frame and the rotor fits inside the stator (with a slight air gap separating the rotor from the stator). There is no direct physical or electrical connection between the rotor and stator.

Function

The enclosure protects the electrical and mechanical parts inside the motor from the environment. Shaft mounted bearings support the rotor and allow it to turn freely. A cooling fan may be mounted on the shaft.

The screenshot shows a sidebar with a tree view of motor theory and a main content area with text, a list of components, and two diagrams of motor enclosures.

- **E-Learning** can provide a 24/7 self-paced study environment for trainees. Using graphics and interactive learning the modules include common underpinning knowledge (e.g. compressor principles) and equipment or process-specific content. E-Learning can be used to reinforce other learning activities or provide periodic renewal training.
- **The PetroSkills competency system** can include on-line assessments that can be used to help the learning process and as part of the validation of training.

Instructor-Led Training



- **PetroSkills** offers the world's largest O&M learning and development program with over 2,200 modules provided by



- **PetroSkills** provides customized workshops and integrated development programs using SAIT content or to site specifications.
- **PetroSkills** instructor-led classroom-based training and workshops provides trainees with access to experts and with peers within their own company or other companies.

Learning Resources (Web-based or Local)



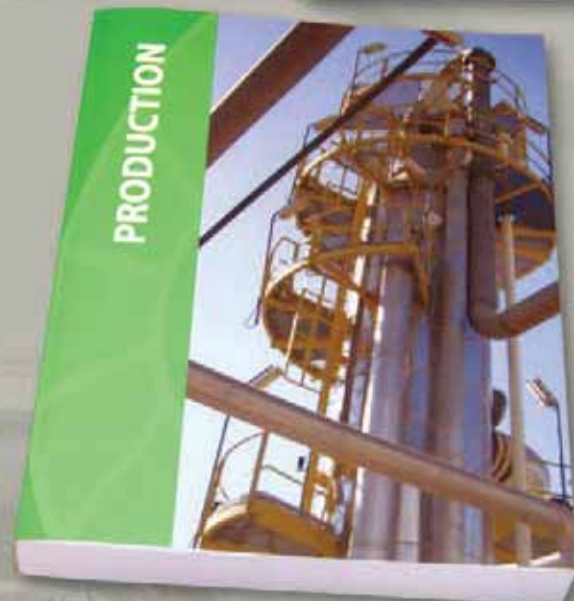
- Real competency is developed in the workplace with on-job training and work experience job assignments.
- Capability assessments provide standardization.
- Competency framework provides the structure for workplace training.

Learning Resources (Site Specific Content)



PetroSkills consultants can develop site specific:

- Unit plant training manuals describing the plant operations and controls
- Operating and Maintenance procedures, checklists and work plans
- Job Aids (E.g pocket books) to meet the local requirements
- All of these materials are validated and signed off by your Subject Matter Experts





PetroSkills

Ready and able.



Knowledge is of no value unless you put it into practice.

— ANTON CHEKHOV

PetroSkills®

DELIVERING KNOWLEDGE. DEVELOPING COMPETENCE.

Please contact PetroSkills O&M for more information:

O&M@petroskills.com

PetroSkills Conference Center

25403 Katy Mills Parkway

Katy, TX 77494

832.426.1200

www.petroskills.com