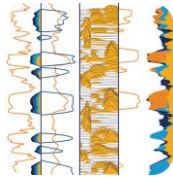


## PETROPHYSICS

### GUIDED WORK EXPERIENCES



*PetroSkills Guided Work Experiences (GWEs) enable technical professionals to deliver a tangible work product through specific deliverables and performance measures. GWEs have been developed by industry experts and deliver the on-the-job connection between knowledge and action.*

#### Data Acquisition

- Plan and Manage Petrophysical Data Acquisition Program
- Logging Operations
- Supervise Mud-logging Operations
- Supervise Coring Operations
- Supervise Cased Hole Logging Operations

#### Openhole Log Evaluation

- Data Quality Control and Editing
- Discriminate Reservoir / Non-Reservoir
- Identify Mineralogy and Lithology from Logs
- Porosity Determination
- Statistical Log Analysis
- Saturation Determination
- Estimate Permeability from Standard and Specialized Logs
- Evaluate Wireline Formation Testing
- Predict Pore Pressure
- NMR Logging
- Interpretation of Borehole Images and Dip Meter Data
- Evaluation of Shear Data from Sonic Logs
- Neural Networks
- Horizontal and Deviated Well Logging Techniques

#### Integration of Core and Log Data

- Integrate Routine Core Analysis
- Integrate Special Core Analysis
- Analyze and Integrate Petrography and Mineralogy Data
- Unconventional Core Analysis

#### Cased Hole Log Evaluation

- Zone Isolation and Pipe Integrity
- Evaluate Cased Hole Logs for Reservoir Surveillance
- Evaluate Cased Hole Logs for Inflow Performance

#### Integrated Field Studies

- Assess Petrophysical Uncertainties
- Upscale Petrophysical Results to Statistically and Dynamic Models

#### Quantitative Seismic Studies

- Generate Well Synthetics
- Model Seismic Amplitudes